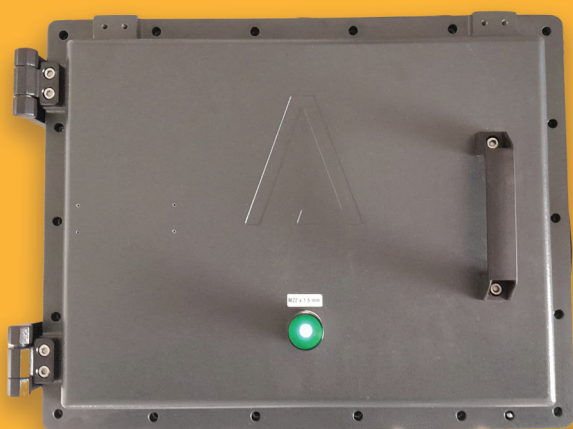


➤ Natural Gas & H₂ Analyser

➤ ChromEx400
ChromEx200



Modular ATEX Multi-Gas Analyzer for industrial use.

Based on APIX Analytics patented miniaturization technology,
ChromEx® is the new Plug&Play ATEX GC.

It now features unmatched flexibility with up to 4 different
analytical columns, and the ability to analyse different
samples simultaneously.



THE FIRST TRULY PLUG AND PLAY GC

- › Electronic and Fluidic Plug and Play
- › Wifi Antenna (option)
- › Up to 4 Analytical Columns
- › Up to 3 independent calibration gases

BENEFITS OF USING OUR ANALYTICAL MODULES

FLEXIBILITY

- › 3 different calibration gases

SPEED

- › Separation of complex gas mixtures in less than 1 minute
- › Fast cycle time with isothermal or with temperature ramp operation

RELIABILITY

- › Guard column with backflush
- › Best in class TCD & NGD Detectors

REDUCED OPEX and CAPEX

- › Easy Maintenance: add or replace a module within a minute
- › No need for service from a GC expert
- › Low gas consumption

APPLICATION

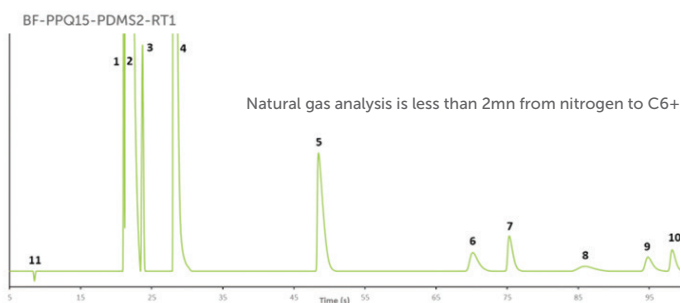
SAMPLE COMPOSITION

Element	Concentration (%)
1 N2	2.70
2 CH4	89.57
3 CO2	1.00
4 C2H6	5.00
5 C3H8	1.00
6 iC4H10	2.00
7 nC4H10	2.00
8 neoC5H12	1.00
9 iC5H12	1.00
10 nC5H12	1.00
11 C6+	0.03

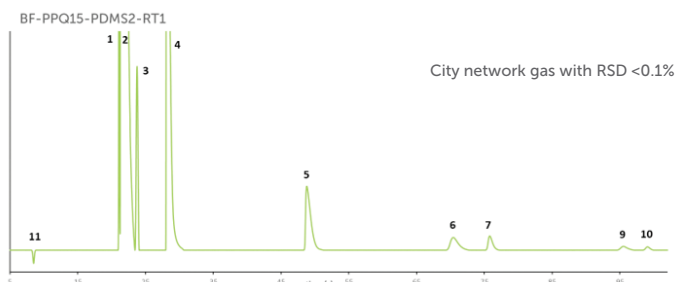
NATURAL GAS	STANDARD RANGE *
N2	0,01 - 1,8%
H2	0 - 100%
CH4	50 - 100%
THT	0,02 - 1%
C2H6	0,01 - 20%
C3H8	0,01 - 10%
CO2	0,01 - 15%
C4,C5	0,10 - 0,35%
C6+	0,09 - 0,4%

(*) specifications subject to change

NATURAL GAS



Repeatability <0.0005 BTU



OIML R140/WELMEC/ISO6976 norms certified.

With the certification, we are able to provide certified HHV values for natural gas. Our systems can run analysis during 12 months without any recalibration.



ChromEx fits also for analysis of specialty gas, Biogas, H2, biomethane, LNG and others please ask us for detail.

CHARACTERISTICS



ChromEx200

- › Dimensions: H 485; D 405; W 281
- › Weight: **30,4 kg**
- › Input: **24V DC**

ChromEx400

- › Dimensions: H 596; D 526; W 290
- › Weight: **39 kg**



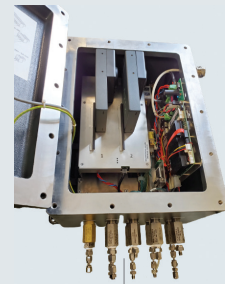
- › **1 or 2 carrier gas** (He, H₂, N₂, Ar...)
- › Carrier gas pressure: **4 bar**
- › Sample Gas pressure: **0.3 bar**



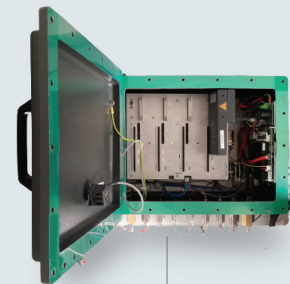
- › Power: **150W** depending on configuration
- › Carrier gas consumption: **less than 5mL/min**
- › Sample gas consumption: **between 2 to 5 mL/min**



- › Up to **4 analytical modules**
- › Operating temperature range: **-10 to 55°C**
- › Noise emission: **45dB**



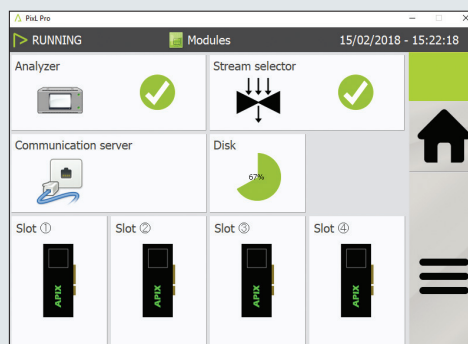
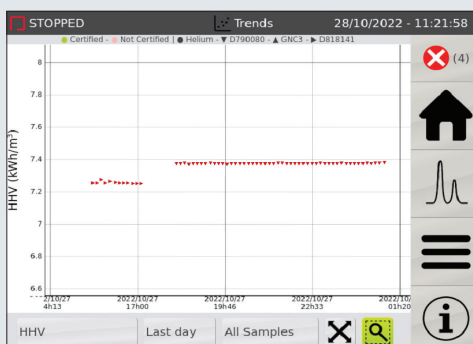
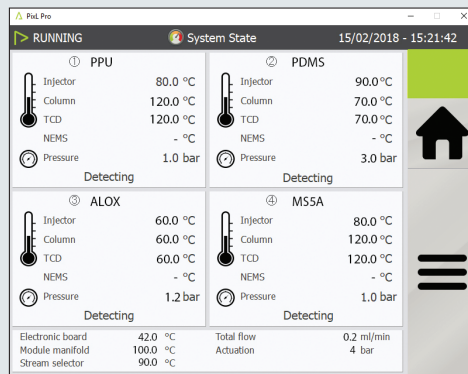
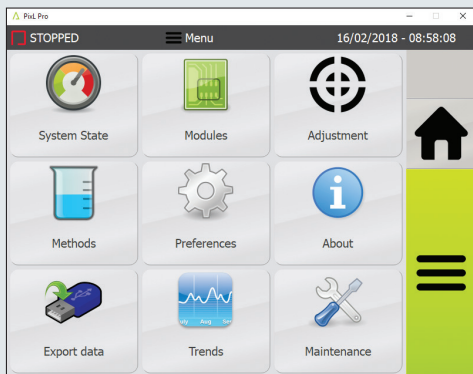
ChromEx200



ChromEx400

SOFTWARE

Full control and compliant with APIX process software: **PixL^{Pro}**
 Also available with the laboratory software: **Clarity**



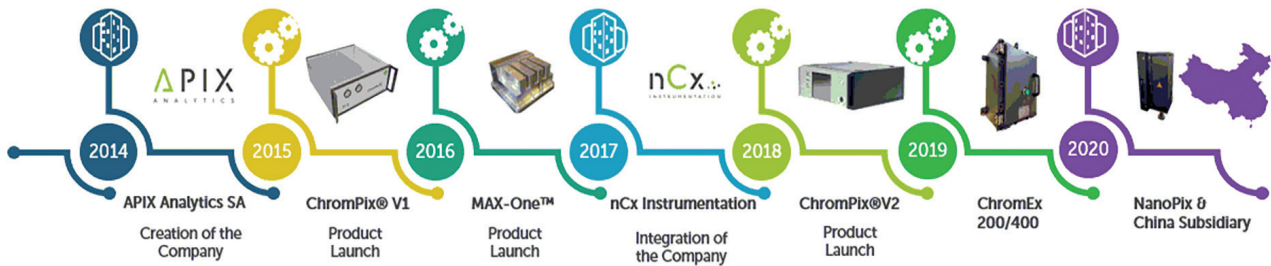
COMMUNICATION
 ModBus TCP/IP
 RS485

ANALYSIS OUTPUT
 Wobbe Index
 Heating value
 Density

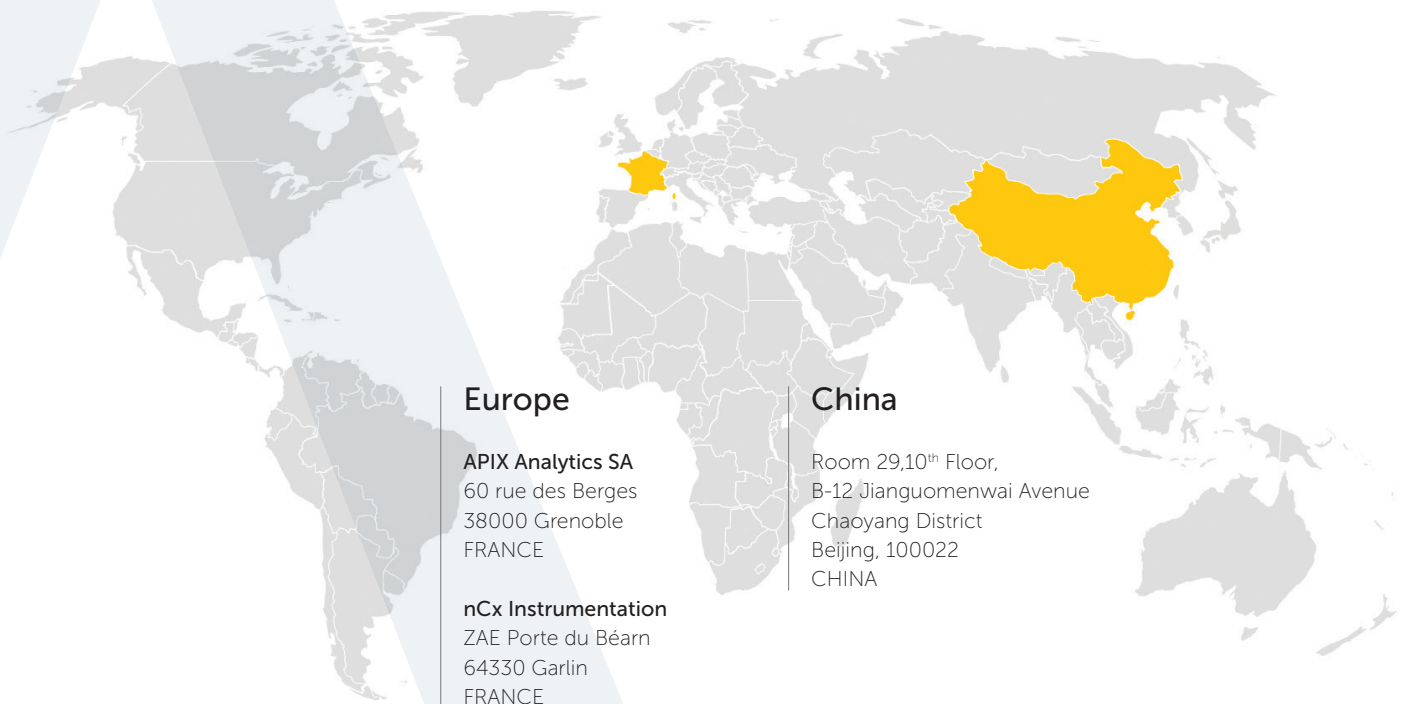
WEB BROWSER INTERFACE
 PixL Console

ABOUT APIX ANALYTICS

APIX Analytics (SA), founded in June 2014, is the commercial emanation of 8 years of collaborative research between CEA (France) and California Institute of Technology (Caltech, USA). APIX is focused on the development of highly miniaturized multigas analyzers systems based on integration on silicon of traditional analytical chains: sampling, injection of gases, separation of complex gas mixtures to enhance specificity and then detection, identification and quantification of each mixture compound.



LOCATIONS



www.apixanalytics.com

Mini parc Polytec • Immeuble Tramontane • 60 rue des Berges • 38000 Grenoble